

BRINGING
STRUCTURE
TO STEEL

CE Marking EN 1090



Fabrication
Management
Software

Steve Watson
Sales Manager



Our Company – STRUMIS Ltd

With over **40 years** experience in the steel fabrication industry, we can boast a unique level of experience **Fabrication Management Software**.

STRUMIS is the “**Industry Standard**” Used by more than 20,000 users, globally in 62 Countries, available in 15 languages.

We are privately owned and British based in Derby.



Your Presenter – Steve Watson

With over **38 years** experience in the steel fabrication industry.

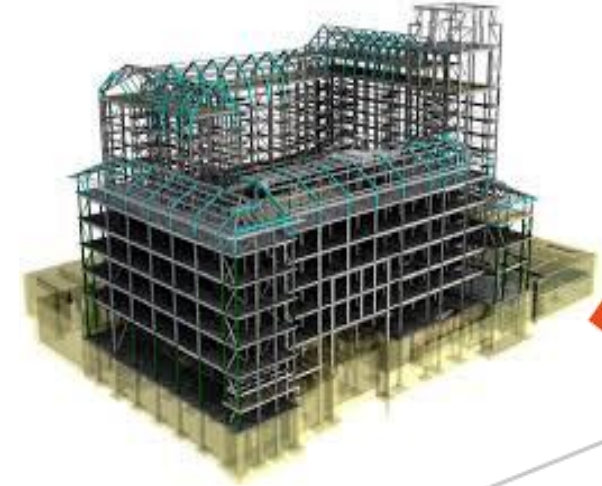
Advised steel fabricators across the world on best practice and CE Marking – 400 personal clients

Used STRUMIS previously at Thircon Ltd & Tubemasters Ltd so can appreciate the many benefits STRUMIS provides .



Our Key Industry Focus

- ✓ Agricultural Buildings
- ✓ Equestrian Buildings
- ✓ Industrial Buildings
- ✓ Balconies & Stairways
- ✓ Structural Steel Buildings
- ✓ General Purpose Buildings





Proven Success in UK & Ireland



BRINGING
STRUCTURE
TO STEEL



Common Business Issues

- ✓ Reduce Costs & Improve Profits
- ✓ Increase Productivity & Efficiency
- ✓ Error Reduction & Less Scrap
- ✓ **Full Traceability & Legislation = CE Marking**



Focus - CE Marking EN 1090

- ✓ A Mandatory Legislation within EU from 1st July 2014
- ✓ Severe Consequences for non-compliance EN-1090
- ✓ All market sectors including agricultural and equestrian
- ✓ UK will adopt its own version of CE Marking after Brexit
- ✓ How can STRUMIS software program help fabricators?.....

STRUMIS Can Help....



- ✓ Total traceability on all building components
- ✓ Help achieving FPC – Factory Production Control Certificate
- ✓ Material Test Certificate storage and management
- ✓ Cast reference traceability
- ✓ Finite traceability of same material & same cast ref
- ✓ Instance level tracking
- ✓ People & Process tracking & time recording
- ✓ Full Traceability & Legislation = CE Marking



3D CAD Integration



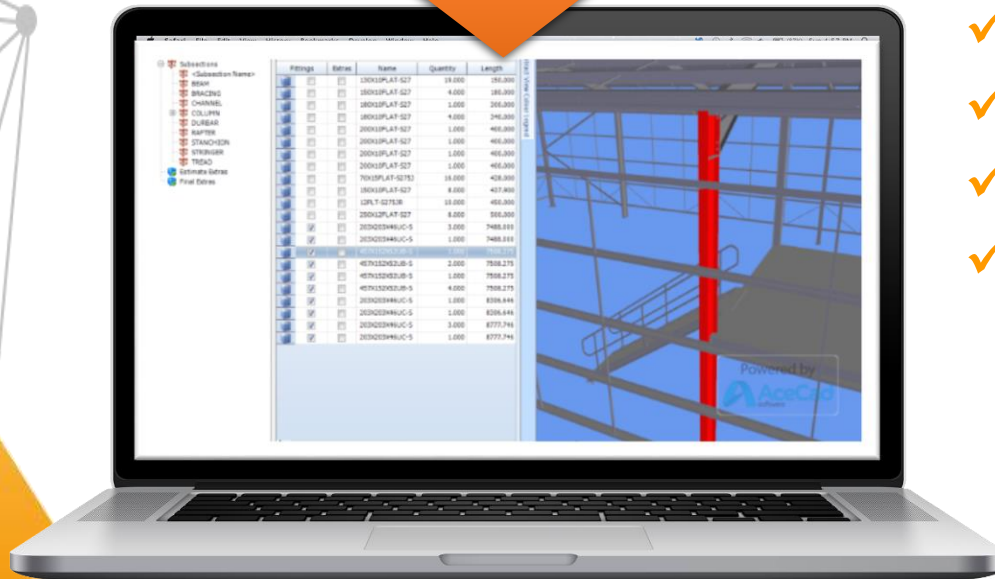
BRINGING
STRUCTURE
TO STEEL



TEKLA®



AUTODESK



- ✓ Instant Material Imports
- ✓ Accurate Bill of Material
- ✓ View 3D Model
- ✓ Bi-Directional data flow
- ✓ View Fabrication drawings
- ✓ View NC/CAM files
- ✓ Assembly & Part ID

Enquiry
Estimating

CAD
Integration

Items &
Inventory

Purchasing &
Suppliers

Contracts
Planning

Production
Control

Document
Management

Despatch &
Erection

Procurement



**BRINGING
STRUCTURE
TO STEEL**



- ✓ Optimized Linear Bar & Plate Nesting to reduce wastage & minimise steel costs.
- ✓ Nested bars report record parts to be cut from each bar
- ✓ Issue purchase orders & receipts
- ✓ Receiving steel and record cast reference & test certificate.
- ✓ Link to 3rd Party Accounts – SAGE, QuickBooks etc.



STRUMIS Inventory



BRINGING
STRUCTURE
TO STEEL

- ✓ Manage all steel and non-steel material and consumables in various storage facilities & locations
- ✓ Easily manage inventory transactions Store and re-use off-cut remnants with Documentation & Certificates
- ✓ Full traceability of Steel with Heat/Cast Ref Test Certificates ISO9001, CE Marking & FPC
- ✓ Hyperlinks inside inventory to original test certificate



Production Control



**BRINGING
STRUCTURE
TO STEEL**



- ✓ Automated part routing
- ✓ Optimum cutting plans
- ✓ Production Process timing
- ✓ Real-time feedback
- ✓ Employee Time recording

Peddinghaus

voortman
STEEL GROUP



FICEP

KALTENBACH



VERNONTOL
INDUSTRIAL PIPE CUTTING MACHINERY



PythonX
A Lincoln Electric Company

@Controlled Automation

Enquiry
Estimating

CAD
Integration

Items &
Inventory

Purchasing &
Suppliers

Contracts
Planning

**Production
Control**

Document
Management

Despatch &
Erection

Production Control

- ✓ Optimised production part routing
- ✓ Optimised Cut/ Drill times per machine & part
- ✓ Send nested bar and piece information to machines
- ✓ Receive automatic feedback for real-time status
- ✓ Bar-code progression & tracking
- ✓ Production Console on tablet for labour time recording
- ✓ Mobile application for iPhone and Android devices

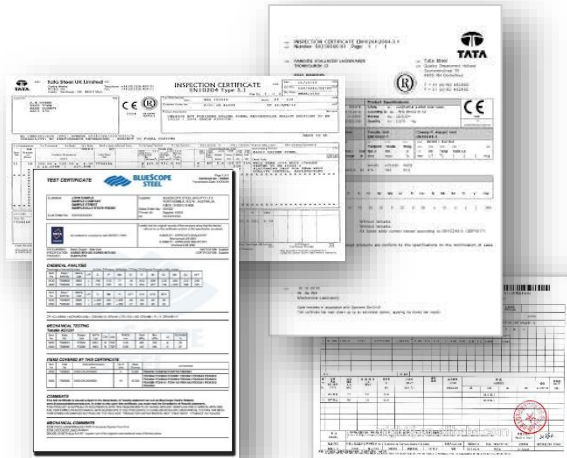


Workshop & Site Feedback

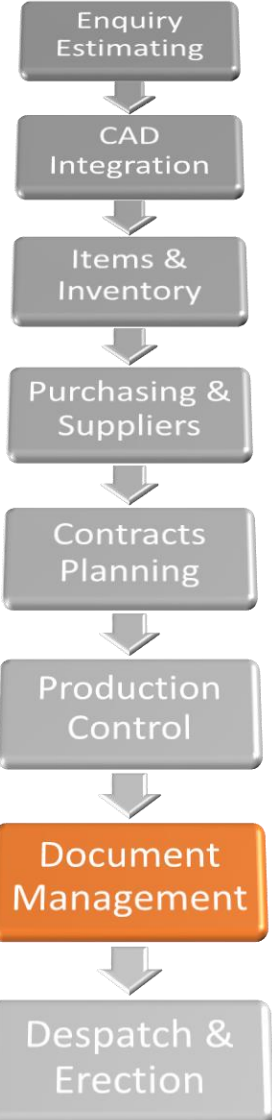
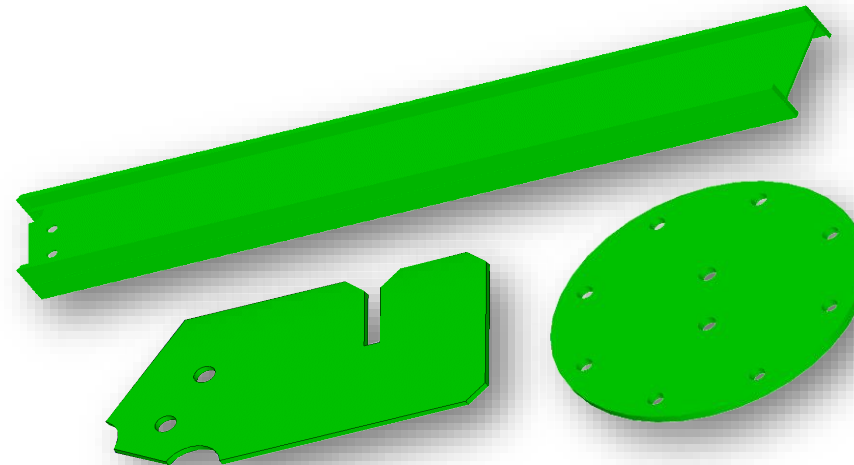
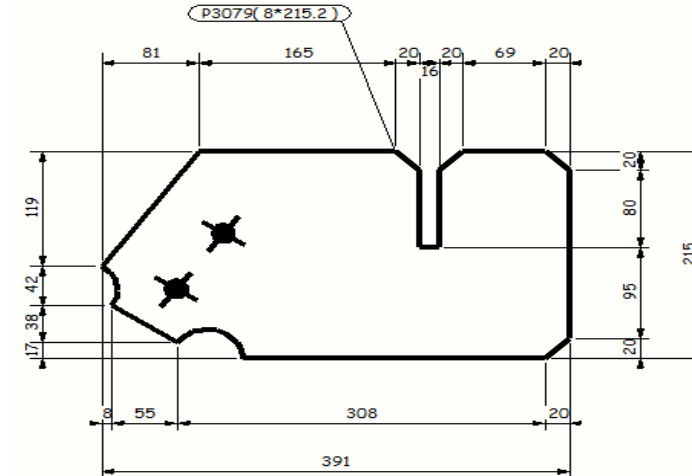


Document & Data Management

- ✓ Store, view & print any document
- ✓ Revision Control
- ✓ RFI Control & Management
- ✓ Document Issuing Transmittals
- ✓ Track Status – check, approved etc
- ✓ Fabrication drawings, NC files, Test certificates etc

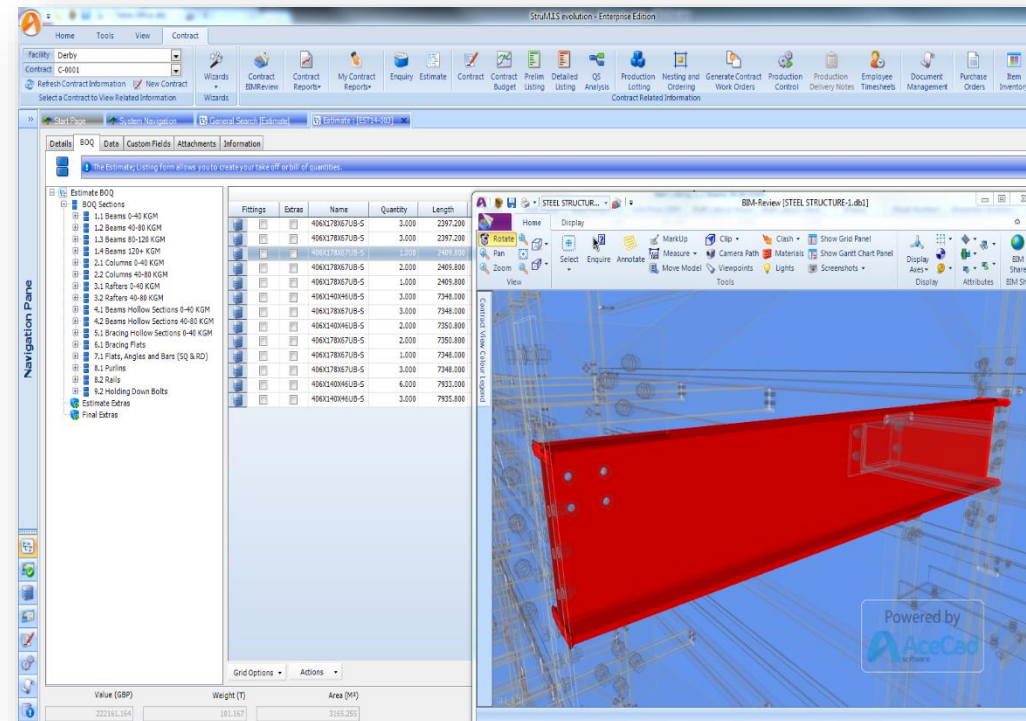


**BRINGING
STRUCTURE
TO STEEL**



BIMReview - Model Viewer

- ✓ View Assemblies within model
- ✓ View Parts within model
- ✓ Identify Project Status
- ✓ Real-Time Updates shop & Site
- ✓ Share with your clients
- ✓ Unique Technology
- ✓ Clash Detection
- ✓ Competitive Edge to YOU



**BRINGING
STRUCTURE
TO STEEL**

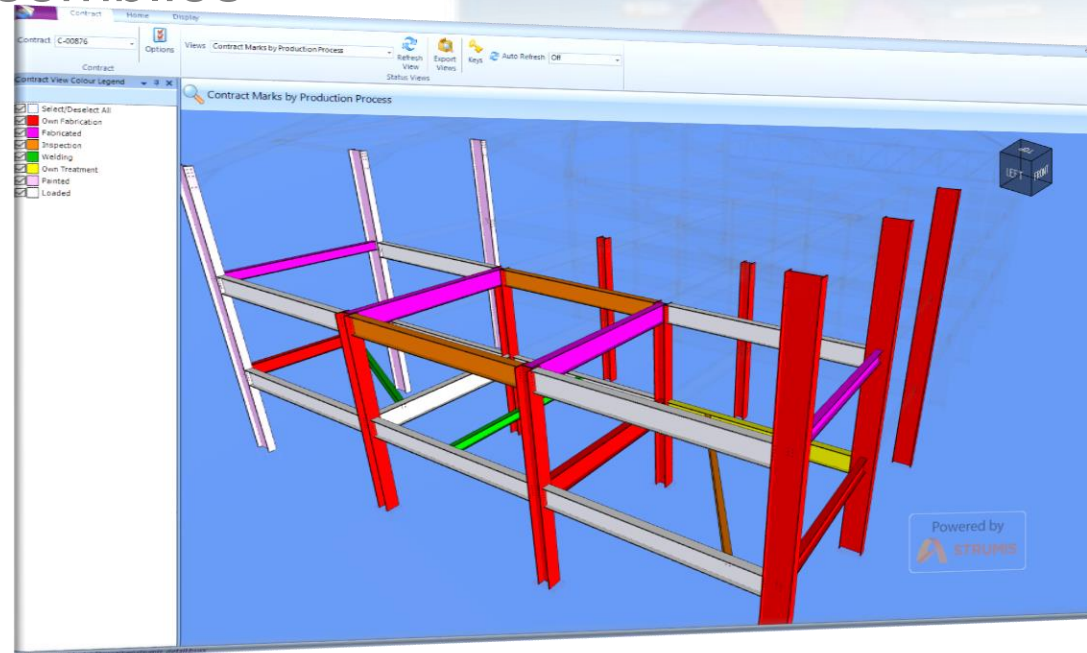
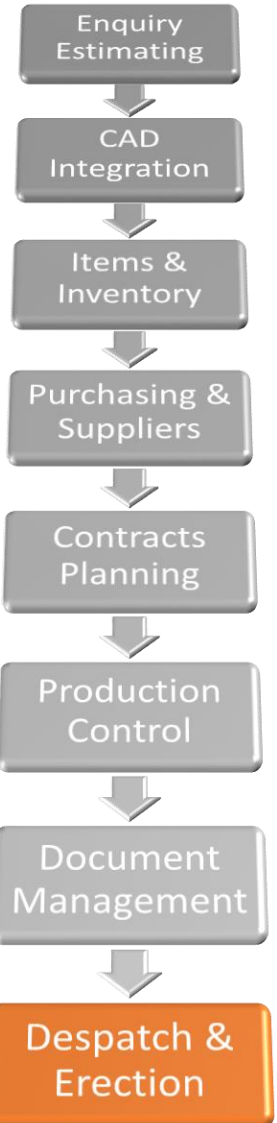


Despatch & Erection

- ✓ Delivery notes to sub-contractor
- ✓ Delivery notes to site
- ✓ Colour coded process display
- ✓ Packages & Containers
- ✓ Mobile App for site assemblies
- ✓ Real-Time updates



**BRINGING
STRUCTURE
TO STEEL**



Summary of CE Marking Benefits

- ✓ Full Traceability (steel & labour)
- ✓ Better Quality
- ✓ Eliminate Errors
- ✓ Reduced Costs
- ✓ Lower Overheads
- ✓ Increased Efficiency
- ✓ Improved Productivity
- ✓ Greater Profitability



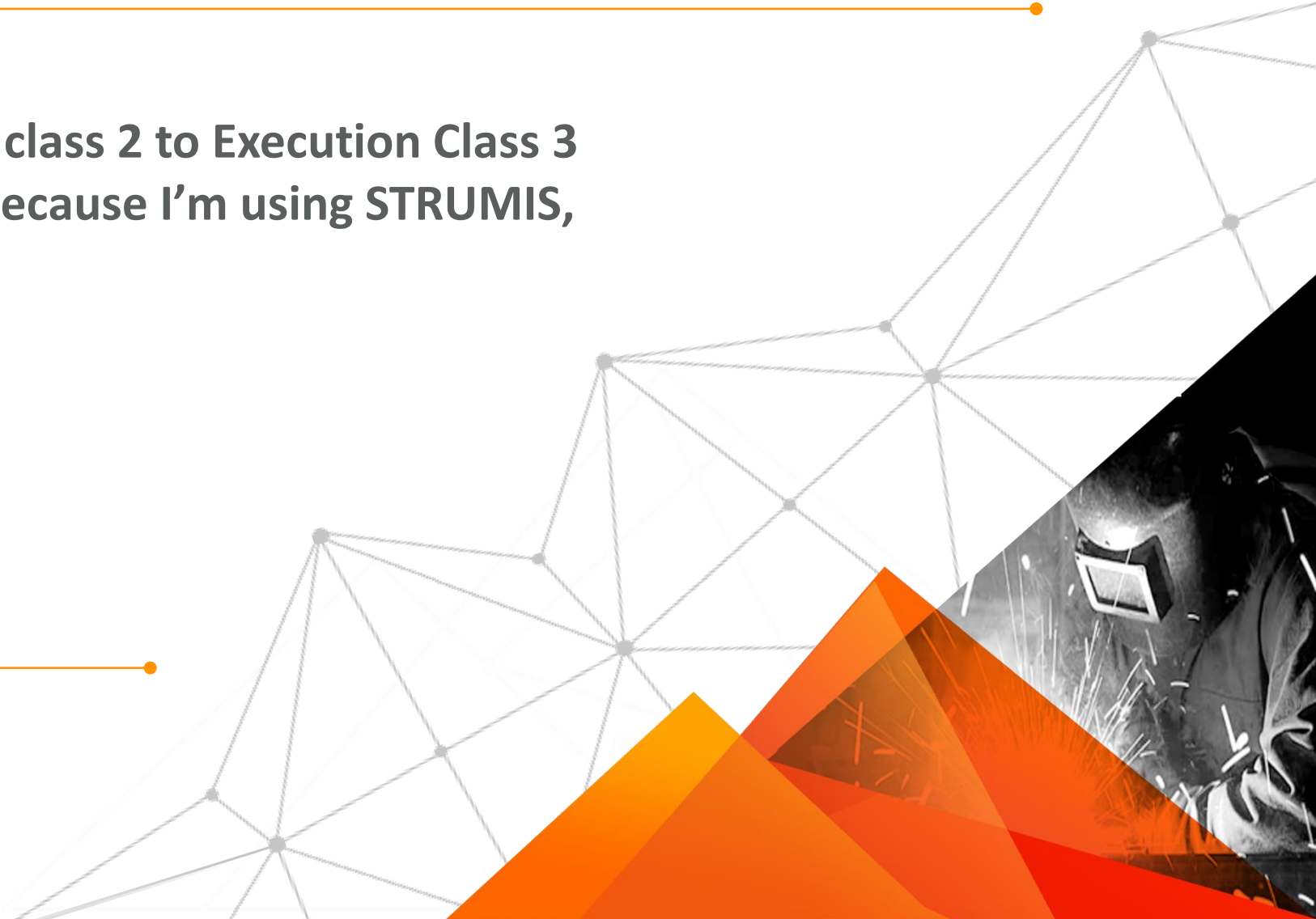
- ✓ A **safe & rapid** return on your **Investment**



Customer Statement.....

“Upgrading from Execution class 2 to Execution Class 3 was made so much easier because I’m using STRUMIS, it was a doddle”

Mr Jody Stead
A & J Stead Ltd
Malton
North Yorkshire





BRINGING
STRUCTURE
TO STEEL



Any Questions?

